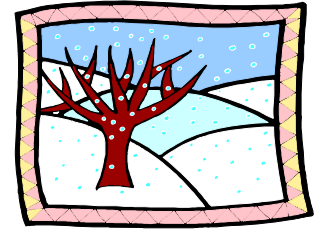




# Bonsai Society of Dallas

December 2006



## Message from the President:

By George Straw

Winter has finally reached us. It reached a high of 37 and a low of 26 on Thursday. As usual, I was out trying to get everything in the greenhouse before the freeze hits. I do hope you have your tropicals warm and the outside plants watered well for the cold.

If you have read your email that was sent you by Sandi, you know that North Haven Gardens has had a policy change. The 3 hour rate has gone up from \$30.00 to \$45.00. That is not the big concern for me. They have also changed their hour that the room is available. It is only available from 5-8:00pm. That means that if we meet at 6:30pm we will only have 1 1/2 for a meeting. We usually have 2 1/2 hours. If we stay there, it would mean that our speakers will not have much time for demo and talk.

Please check around and see if you can come up with suggestion of places that we might meet.

The new hours will go into effect in January.

### NEW OFFICERS:

It is time to start thinking about new officers for the club. We would normally have an election in December for the new officers, but the club voted to postpone the installation of the new officers until May 1 due to the convention in April. But we need to start thinking about people that might be good for the positions or if you would like to step up and add your name to the ballot, that would be great. We will need the name for the ballot by March 1 so that we can vote at the April meeting. The new officers will then take over on May 1.

I will continue to remind everyone about this in each newsletter and please let me know if you are interested in a position or would like to nominate someone for a position.

### CONVENTION:

We have already received money for Vendor tables, registration and for workshops for the Convention. We will have the convention information at the meeting in December so if you are interested in some of the workshops, you may want to act pretty early on it. We have great trees and outstanding artists, so the workshops will fill up early.

The website information has been sent to Andy so he should have that up and running before long.

Remember that the convention is April 20-22 and we will be needing a lot of help as we are expecting a very large turnout with the artists and material that we have. We are also adverting in several of the Bonsai magazines.

I hope to see you December 7<sup>th</sup> at the meeting, and everyone have a great Holiday!

George

## December Program by John Miller

Date: Dec. 7, 2006  
Time: 6:30 PM  
Place: North Haven Gardens  
7700 Northaven  
Dallas, TX

Remember those junipers for the club to auction at the 2007 Convention that were styled last May? It's time to bring them back for a show and tell and re-view! Also, I want you to bring anything else that was worked on or discussed at

any meeting during the year such as the trident maples by Matt Ouwinga in August.

Any show and tell items are always welcome. In fact, it is desired for you to bring one to share, either because it is good, or you want advice, or just something to avoid.

Sometimes a show and tell tree is a great way to help

not only you, but others to learn new skills and tips, as well as to tell others where they might find material. So please bring them!

Also, if you would like to donate a tree to the auction at the Convention and would like some help in styling it or need some critique, please bring it! We would be very grateful for the donation!!

### BSD Calendar

- Dec. 7 - Progress critique on the trees from the May program
- Jan. 4 - TBA
- Feb. 1 - TBA
- Feb. 24-25 - Advanced Group Workshop 2007 at the Irving Community Center

### BSD Member Tree Highlight

Kingsville Boxwood  
and pot  
by Sandi McFarland



### Hey folks!

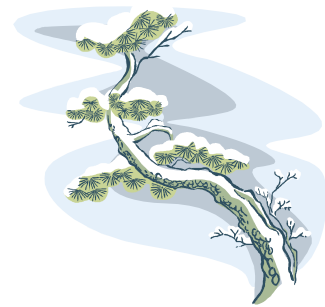
Send me pictures of your favorite trees for the BSD Member Tree Highlight! If you would like the picture in the newsletter, but not your name for safety's sake, I'll be happy to just use your first name and last initial. Please email to [potter@pegasuspottery.com](mailto:potter@pegasuspottery.com)

### Other Dates of Interest

- Through Dec. 31 at the Dallas Arboretum - Holiday at the Arboretum: The Artistry of the Nativity
- Through Dec. 31 - Ultimate Tree Houses at the Dallas Arboretum

## December Bonsai by John Miller

Be sure to mark your calendar for the LSBF convention in April next year. It will be held in Dallas on April 20-22 at the Holiday Inn Select on Mockingbird across from Love Field. Registration forms and info will be available in October and also on the club website ([www.bonsaisocietyofdallas.com](http://www.bonsaisocietyofdallas.com)). Headliners will be Marco Invernizzi, Boon Manakivisipart, Suthin Sukosolvisit, and Shane Cary. Michael Hagedorn, Howard and Sylvia Smith, and I will also be participating.



Not too much has to be done right now. That is if you prepared last month and you have no tropicals inside to care for. The big thing is to know what temperatures your trees can withstand and to remember that water is important in the winter time.

Since the trees are not using as much water during dormancy, it is easy to overlook checking on them. The low humidity usually found during winter helps dry the soil. Winter sun can be pretty hot and if it shines directly on the pot it will hasten the drying process. Winter will usually also be windier. Therefore, however you bed down the trees, you need to check the dryness often. The same trees that needed more water last summer will also need to be checked more often during the winter. I think that more trees are lost during the winter to having the soil dry out than from the actual cold.

Deciduous trees should not be placed where they receive winter sun. After a period of dormancy, the heating of the tree could possibly cause it to break dormancy prematurely. If that happens, you would need to keep it above freezing the rest of the winter. After they go dormant, they have no need for any sunshine.

Evergreen types especially, and deciduous to a lesser extent, should not have the root ball subjected to alternate freezing and thawing. That process tends to tear and damage the roots. Placing the trees on the ground and using a mulch will minimize this problem.

Plants have different degrees of hardiness for their top growth and their roots. The reason being that the ground acts a large reservoir of heat and, here in Texas, seldom freezes more than an inch or two down. Therefore, plants like the pomegranate and crepe myrtle which are at the northern extent of their range outside will not be hardy to freezing in pots. Any plant that you are unsure of should be protected from freezing. This can be a problem because if they are not kept cool after they go dormant they will break dormancy and start to grow too soon. Growing without sufficient light causes long spindly growth which you cannot control. My best solution for this when I lived in town was to have a long platform with two wheels that I pulled into the garage on nights where freezing was forecast and kept outside at all other times.

The cold weather will keep any insect problems under control outside. In winter you should use a dormant oil spray to kill overwintering insects and their eggs. You can also use lime-sulfur in a dormant spray solution which will also help with fungal problems. Be sure to follow the label directions when mixing and using the lime sulfur. It can be dangerous stuff if misused. You should watch for damage from rodent types, rabbits, squirrel, and rats. They will prune branches and strip bark rather quickly.

Bonsai in greenhouses or indoor bonsai will need to be watched for the normal indoor problems. Low humidity, spider mites and scales are the biggest problems here. Aphids can also show up. Trying to keep the humidity up by placing your trees on a humidity tray can possibly give you some soil problems, root rot or some other fungal disease. I use the same controls in the greenhouse that I use outside all year.

You can take advantage of the winter slowdown by spending your time getting pots ready for spring, clean and sharpen your tools, study what changes you would like to make on your trees and so forth.

On bonsai basics: Other than going to Bonsaismiths and buying a good bonsai, there are four steps to getting something to be proud of:

1. Obtaining good raw material: Go on club digs, scour nurseries (you got to really dig there too), look for material from growers.
2. Styling to realize the trees full potential: To learn, you must do lots of workshops and participate in round robin discussions. Understand the why as well as the what of styling.
3. Development of the branches: Keep your shears with you when watering; keep after the trees when they are actively growing. Do not let new shoots get long. Lots of twigs mean smaller leaves.
4. Maintaining that development: This entails learning to do rejuvenation pruning and proper fertilization.

Of these four I consider the last one the most important. Not maintaining the tree properly is akin to obtaining a masters painting and then letting a two year old use crayons to 'improve' it. It grows out of shape fast.



**Mark your calendars for the 2007 LSBF Bonsai Convention!**

Your convention chairs are:

**Chairmen:**

George Straw

*gstra@aol.com* 214-357-3048

Howard Smith

*bonsaismiths@earthlink.net* 972-392-1430

**Co-Chair:**

John Miller

*bonsaimiller@aol.com* 903-776-2910

**Registration & Display Chair:**

Sylvia Smith

*bonsaismiths@earthlink.net* 972-392-1430

**Vender Chair:**

Howard & Sylvia Smith

*bonsaismiths@earthlink.net* 972-392-1430

**Marketing Chair:**

Howard & Sylvia Smith

*bonsaismiths@earthlink.net* 972-392-1430

**Raffle Chair:**

Sandi McFarland

*potter@pegasuspottery.com* 972-438-9782

**Website Chair:**

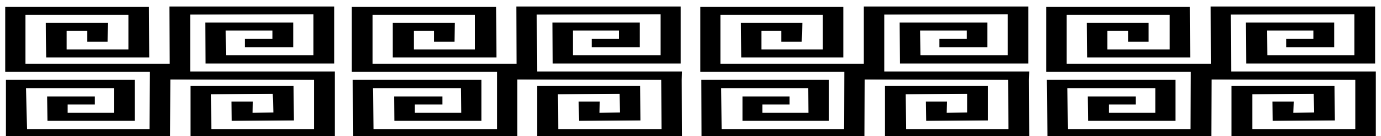
Andy Rutledge

*andy@andyrutledge.com*

**We need your help!**

You can help make this convention successful! Contact one of the convention chairs and offer your help today!!

**Keep an eye on the club website, [www.bonsaisocietyofdallas.com](http://www.bonsaisocietyofdallas.com)! It should be updated with the new convention and registration information soon.**



**2008 LSBF CONVENTION QUESTION**

The 2008 LSBF Convention is already in the works! The list of guest speakers was submitted to the American Bonsai Society for review and they have a question regarding one of the speakers.

Shawn Smith lectures on *suseki* and *diaza* (viewing stones and their stands). The American Bonsai Society wants to stay with trees, but will make an exception if there is enough Texas support.

If you would be interested in such a lecture at the 2008 Convention, please contact Marty Klajnowski at [m.klajnowski@sbcglobal.net](mailto:m.klajnowski@sbcglobal.net) and let her know as soon as possible.

## We Need Your Frequent Flyer Miles!

We will be bringing in four artists for the Convention in April. Would you be willing to use your frequent flyer miles to get a ticket for one of the artists? The club will pay taxes on the tickets! It usually takes 25,000 miles for a round trip ticket. We have one ticket donated already so we just need three more!

Please contact George at 214-357-3048. Thanks for your help!



# Bonsai Smiths

Howard and Sylvia Smith  
www.BonsaiSmiths.net  
bonsaismiths@earthlink.net  
tel# (972) 392-1430  
Fax# (972) 661-0694

Cultivators of fine trees  
Collection maintenance  
Private instruction  
Classes, lectures and demos

### Generous Businesses Give Discount to BSD Members

Present your BSD membership card at the following participating businesses for a 10% discount on merchandise:

- The Bonsai Smiths
- Dream Gardens
- Ray Hernandez's Bent Tree Bonsai
- Pegasus Pottery
- Sanderson Creek Bonsai

We are so grateful to these businesses for their generosity to BSD members! If you have a business and would like to offer a discount to club members, please contact George Straw at [GSTRA@aol.com](mailto:GSTRA@aol.com) or Sandi McFarland at

## Sanderson Creek Bonsai

1634 Stella Street • Fort Worth, Texas

Bonsai, trees/soil, lava, pumice, expanded shale,  
kanuma, akadama, pots, Joshua Roth tools  
& Dyna-Gro/ Dyna-Rok products  
all provided with a smile!




Hours: 2:00 to 6:00 pm Tues-Fri, 10:00 to 5:00 pm Sat  
**817-534-3220** [www.sc-bonsai.com](http://www.sc-bonsai.com)



### Place Your Ad Here!

Business card size—\$5 per month  
Half page—\$20 per month  
Full page—\$35 per month

*For more information, contact Sandi McFarland at  
972-438-9782 or [potter@pegasuspottery.com](mailto:potter@pegasuspottery.com)*



### Pegasus Pottery

By Sandi McFarland  
"Specializing in carved stoneware"  
Cups, plates, bowls, etc.  
And now creating small bonsai pots!  
Let me make something special for you!

1405 Limetree Ln.  
Irving, TX 75061  
972-438-9782

[potter@pegasuspottery.com](mailto:potter@pegasuspottery.com) [www.pegasuspottery.com](http://www.pegasuspottery.com)  
10% Discount to BSD Members!

### BSD Board of Directors

President—George Straw, [GSTRA@aol.com](mailto:GSTRA@aol.com), (214) 357-3048  
Acting Vice President—John Miller, [President Emeritus, bonsaimiller@aol.com](mailto:President Emeritus, bonsaimiller@aol.com)  
Treasurer—Open  
Secretary—Sandi McFarland, [potter@pegasuspottery.com](mailto:potter@pegasuspottery.com), (972) 438-9782